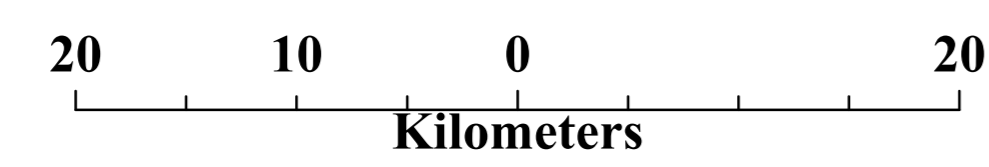
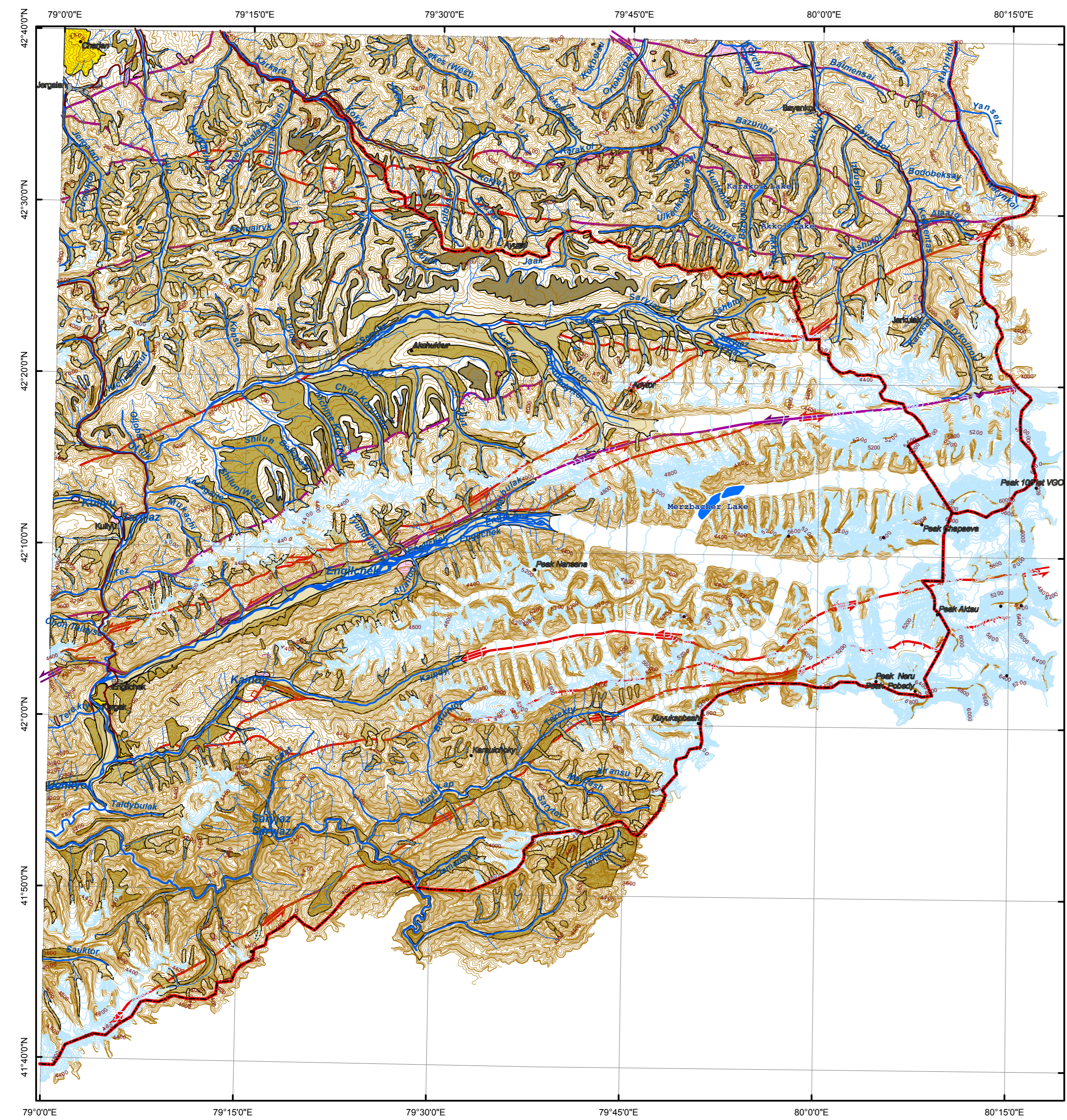


QUATERNARY GEOLOGICAL MAP
of the Khan Tengri Massif
(ISTC project KR-920)
www.cluster.istc.kg/geomap

Scale 1 : 200 000

2008



Legend

- Holocene deposit
- Upper Pleistocene deposit
- Lower Pleistocene deposit
- Middle Pleistocene deposit
- Sharpyldak Group, Upper Pliocene-Lower Pleistocene
- Alluvium
- Glacial deposit
- Upper Holocene landslide
- Upper Pleistocene-Holocene landslide
- Upper Pleistocene-Holocene collapse
- Scar
- Active dextral strike-slip fault
- Active sinistral strike-slip fault
- Active thrust
- Active vertical fault
- Quaternary dextral strike-slip fault
- Quaternary normal fault
- Quaternary sinistral strike-slip fault
- Quaternary thrust
- Quaternary vertical fault
- Lake
- Main river
- River
- Small tributarie
- Glacier altitude
- Altitude-80
- Altitude-400
- Altitude peak
- Road
- Township
- International border

© KYRGYZ-RUSSIAN SLAVIC UNIVERSITY, INTERNATIONAL SCIENCE & TECHNOLOGY CENTER

Geological authors: A. Mikolaichuk, T. Charimov

Cartographic workers: A. Zubovich, M. Gubrenko, A. Bobrovski

Editor: M. Buchroithner

Topographic map source: Topographical Map of Scale 1:200 000. Sheets K-44-XIV, K-44-XV, K-44-XX.
State Mapping-Geodetical Survey of Kyrgyz Republic. The edition of 2003.
State of area for 1998-2002 years

Map projection: Projection: Transverse Mercator, WGS-84

Sources: Turbin L.I., 1966; Trofimov A.K, 1984 & present researches