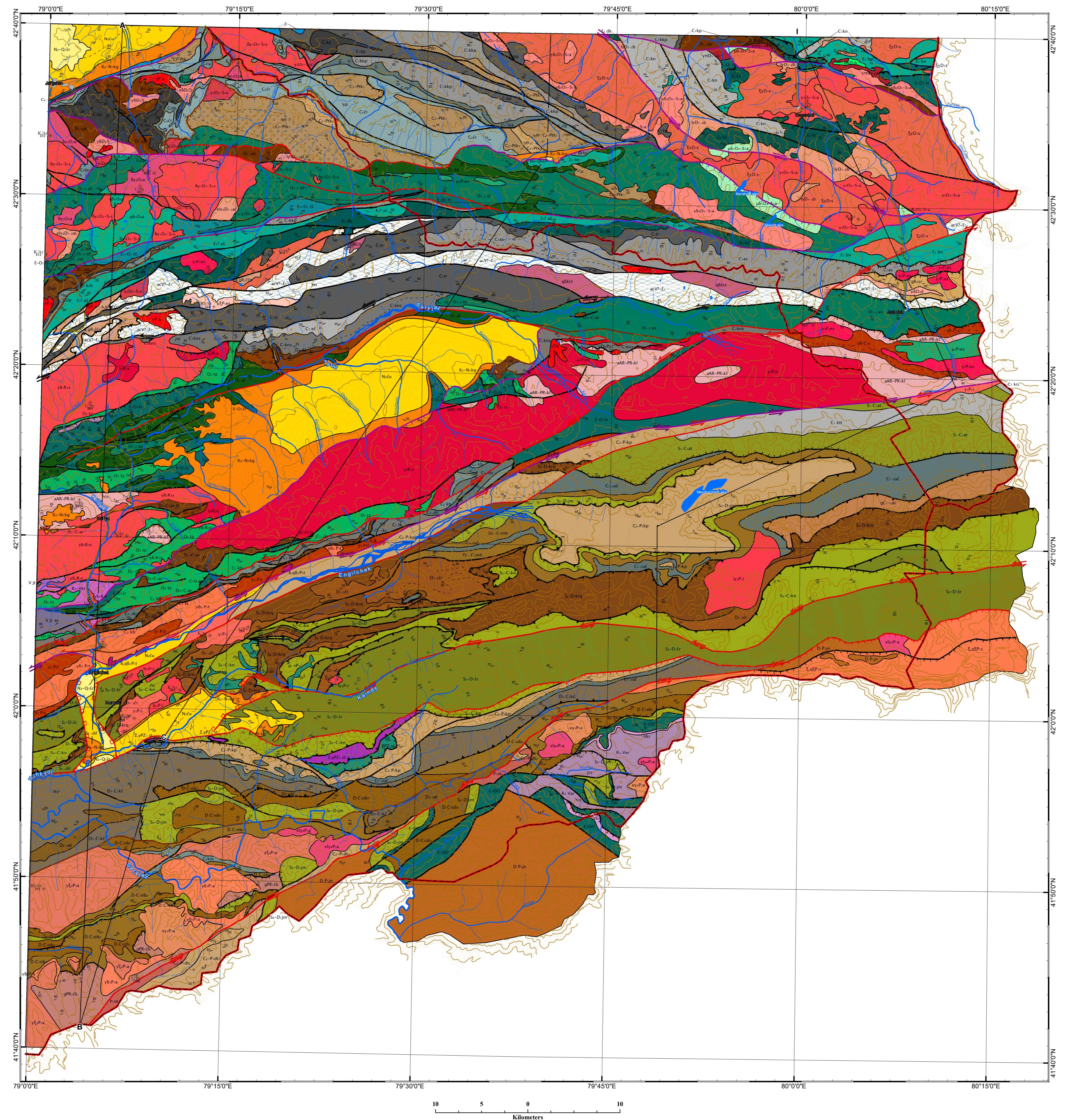


# QUATERNARY REMOVED GEOLOGICAL MAP

of the Khan Tengri Massif  
(ISTC Project KR-920)

Scale 1 : 200 000

2008  
Updated 2015



© KYRGYZ-RUSSIAN SLAVIC UNIVERSITY, INTERNATIONAL SCIENCE & TECHNOLOGY CENTER

Compilers: Farid Apayarov, Timur Vorob'ev, Zinaida Chernavskaja, Lyudmila Skrinnik, Alexander Esmintsev, Dmitri Gordeev, Mikhail Ghes  
Cartographic workers: Alexander Zubovich, Alexander Bobrovski  
Editors: Alexander Mikolaichuk, Manfred Buchroithner

Topographic map source: Topographical Map of Scale 1:200 000. Sheets K-44-XIV, K-44-XV, K-44-XX.  
State Mapping-Geodetical Survey of Kyrgyz Republic. The edition of 2003. State of area for 1998-2002 years

Map projection: Transverse Mercator, WGS-84

Source: Knauf V.I., 1954; Korolyov V.G., 1954; Mozolev L.N., Zakharov I.L., 1963; Rakhman B.I., 1964; Borubaev J., Semyonov B., Supotaev T., 1966; Ignatov G.E., 1966; Jordan V.A., 1967; Streltsov E.A., Semiletov D.K., 1970; Dodonova T.A., 1974; Gutermakher M.M., 1978; Biske G.S., Porshnyakov G.S., Zubitsov S.E., Yagovkin A.V., 1979; Solomovich L.I., 1983; Grischenko V.A., 1985; Shibkov N.V., Khristov E.V., 1988; Chernyshuk V.P., Jenchuraeva A.V., Guschin S.B., 1989; Esmintsev A.N., 1989; Khristov E.V., 1989; Severinov V.A., 1990; Averyanov N.N., Esmintsev A.N., 1995; Skrynnik L.I., 1995 & present researches
