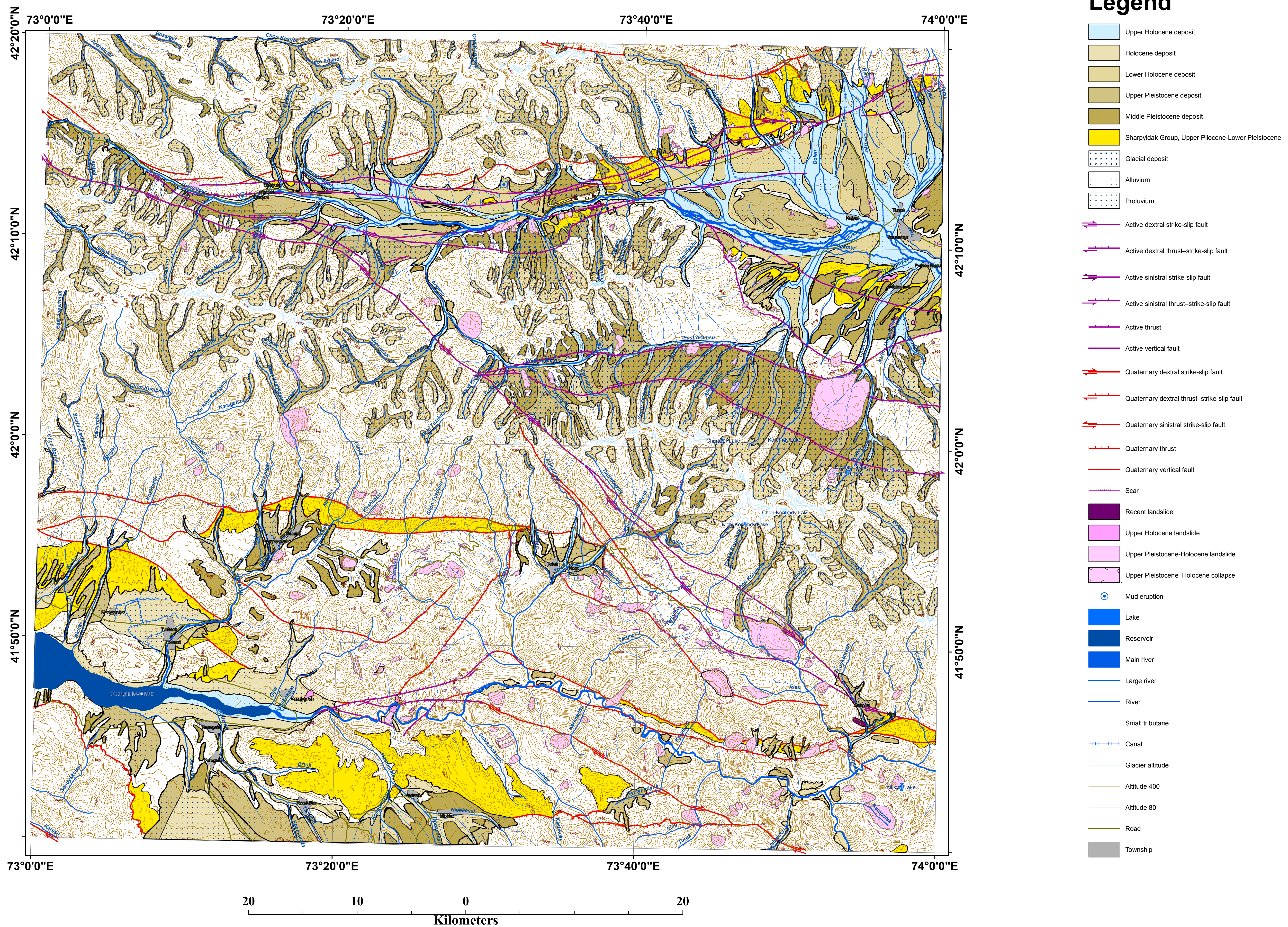


QUOTERNARY GEOLOGICAL MAP (INNER TIEN-SHAN) KYRGYZSTAN

Scale 1 : 200 000

SNSF Project No IB7320-110694
<http://www.kyrgyzstan.ethz.ch>

2008



© Authors: A. V. Mikolaichuk, T.A. Charimov, A.L. Strom, H.-B. Havenith
Cartographic workers: A.V. Zubovich, A.V. Bobrovski & A.V. Gubrenko
Editors: J-P. Burg

Topographic map source: Topographical map of Scale 1 : 200 000. Sheets K-43-XIV, K-43-XX
State Mapping-Geodetical Survey of Kyrgyz Republic. Printed in 1987.
Map projection: Transverse Mercator WGS-84

Source: Dodonova T.A., Kolesnikov B.A., 1959; Kiselyov et al., 1967; Kolesnikov V.A. et al., 1970; Tolskiy V.P., et al., 1972; Morozov V.P. et al., 1979; Orlov L.N., et al., 1979; Chekina S.A., Milkin A.N., 1987; Morozov V.G., et al., 1988; Bogachkin et al., 1997; Ghose et al, 1997; Strom, 2000; Chernov V.I., et al., 2005; Korjenkov A. M., 2006; Chernyavskaya Z.I. et al., 2008 & present researchers