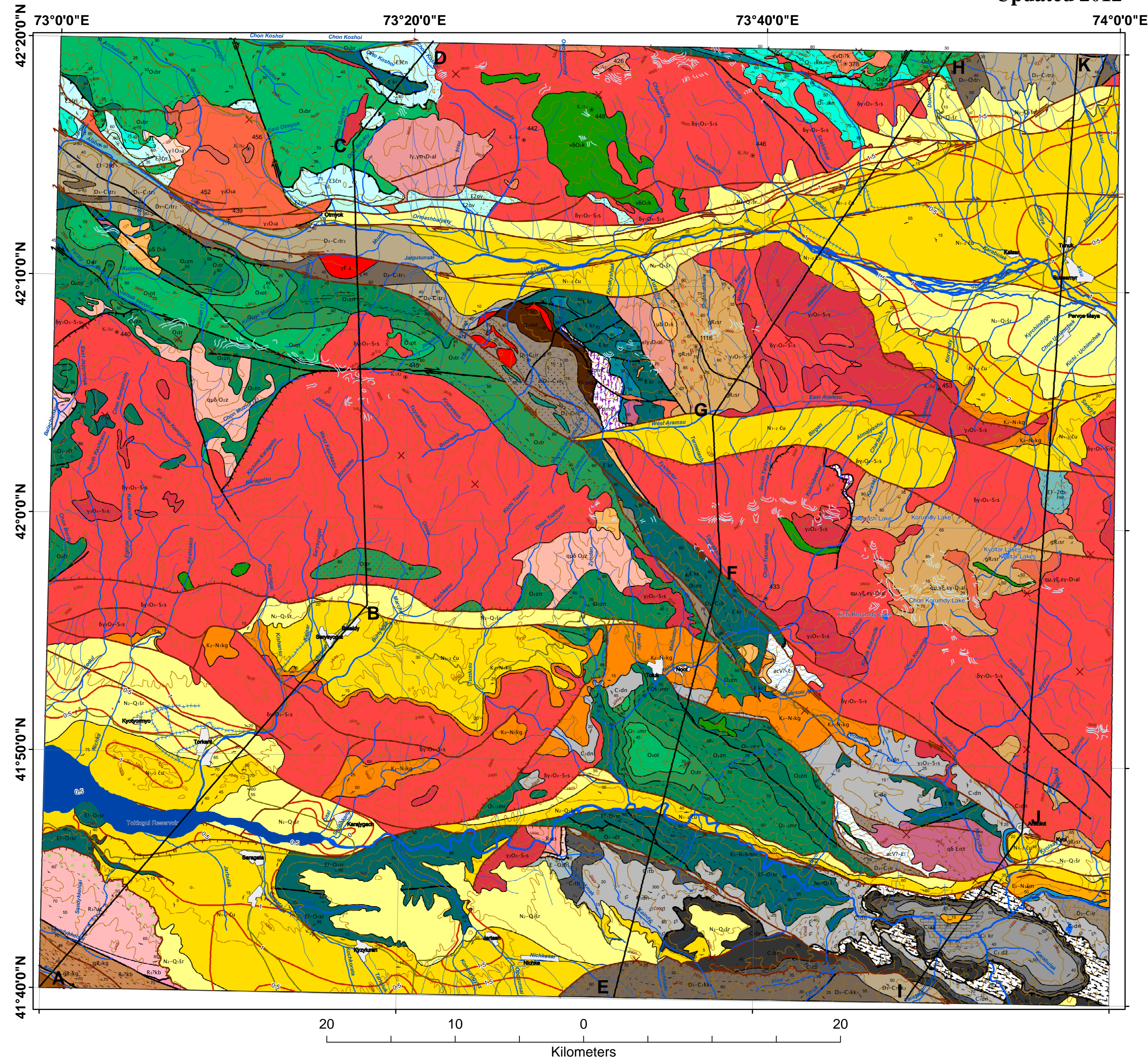


QUATERNARY REMOVED GEOLOGICAL MAP (INNER TIEN-SHAN) KYRGYZSTAN Scale 1 : 200 000

SNSF Project No IB7320-110694
<http://www.kyrgyzstan.ethz.ch>

2008
Updated 2012



Legend

- MESOZOIC AND CENOZOIC COMPLEXES OF THE CENTRAL TIEN SHAN**
- Sharpydyk Group, Upper Pliocene - Lower Pleistocene (N-Q, sr). Grey conglomerates, gneisses, sandstones
 - Chu Group, Lower Pliocene (N, zu). Motley mudstone, and grey clay, sandstones, gneisses
 - Shamsi Group, Oligocene-Miocene (E-N, sm). Reddish mudstone, loams, sandstones and conglomerates
 - Kyrgyz Redstone Supergroup, Upper Cretaceous - Miocene (K-N, kg). Interbedding of carbonate, clay, sandstones and conglomerates
 - Suluterek Formation, Intrusive phase, Upper Cretaceous - Eocene (K-E, st). Dolerite, basalt
 - Group of Lower Jurassic deposits (j). Siltstone, sandstone
- PERMIAN - TRIASSIC POST-COLLISION COMPLEX OF THE CENTRAL TIEN SHAN**
- Achiktash Formation, Permian (p a). Granites, leucocratic granites, granite-porphiry
 - Sandyk Formation, Early Permian (E.P.s). Monzonites, nepheline syenites, syenites, quartz-syenites
- LATE PALEOZOIC COLLISION COMPLEX OF THE CENTRAL TIEN SHAN**
- Serpentine melange, Late Carboniferous (mC). Serpentine, blocks of gabbro, basalt, limestone, schist
 - Gypsum melange, Late Carboniferous (mC). Gypsum, blocks of limestones, sandstones
- KAZAKH BASIN**
- Torsu Formation, Upper part, Upper Devonian - Lower Carboniferous (D-C, tr). Reddish siltstones, sandstones
 - Torsu Formation, Lower part, Upper Devonian - Lower Carboniferous (D-C, tr). Reddish sandstones, gneisses, conglomerates
- SONKUL-TURUK BASIN**
- Dungurme Formation, Lower Carboniferous (C, dn). Reddish sandstones, siltstones, gypsum, conglomerate lens
 - Tabylgaty Formation, Lower Carboniferous (C, tb). Grading sandstones, siltstones, shales, olistostrome
 - Boordy Formation, Lower Carboniferous (C, br). Limestones, clay limestones, dolomites, shales
 - Koktay Formation, Upper part, Upper Devonian - Lower Carboniferous (D-C, kk). Reddish sandstones, siltstones, shales
 - Koktay Formation, Lower part, Upper Devonian - Lower Carboniferous (D-C, kk). Conglomerates, gneisses, sandstones
- KARATAU-NARYN CARBONATE PLATFORM**
- Karakya Formation, Early Carboniferous (C, kr). Sandstones, siltstones, gneisses, clay limestones
 - Japryk Formation, Early Carboniferous (C, db). Lumpy limestones, marls and cherty siltstones
 - Akchetash Formation, Early Carboniferous (C, ak). Limestones laminated and crinoidal-clastic, cherts
 - Katunaryk Formation, Early Carboniferous (C, kt). Massive marmorized limestones
 - Sonkul Formation, Late Devonian - Early Carboniferous (D-C, sn). Thin-laminated dolomitic limestones, dolomites and calcareous breccias
- DEVONIAN VOLCANIC-PLUTONIC BELT**
- Irbulak Formation, Late Devonian - Early Carboniferous (D-C, ir). Reddish sandstones, gneisses, conglomerates, dacites, andesites and tuffs
 - Kolbasy Formation, Intrusive phase, Early ? Devonian (E.D, 7 k). Shonkinites, syenites
 - Kyzylsu Formation, Middle Devonian (u5 D, k). Monzonites, quartz diorites, granosyenites
 - Alma Formation, 3 phase, Early-Middle Devonian (y, D, al). Leucocratic granites, granite porphyries
 - Alma Formation, 2 phase, Early-Middle Devonian (y, D, al). Subalkaline leucocratic granites
 - Alma Formation, 1 phase, Early-Middle Devonian (y, D, al). Quartz-syenites, granosyenites, subalkaline granites
 - Madybek Formation, Lower Devonian (D, md). Basalt, rhyolite, tuffs and conglomerates
- SOUTH TIEN SHAN GEOLOGICAL PROVINCE**
- Akkurgan Formation, Early-Middle Devonian (D, ak). Limestone
- MIDDLE TIEN SHAN GEOLOGICAL PROVINCE**
- Kargysh Formation, Late Riphean (gR, 7 kg) Crystalline schist, gneiss
- NORTH TIEN SHAN GEOLOGICAL PROVINCE**
- TALAS-KARATAU TERRANE**
- PALEOZOIC STRUCTURAL COMPLEX**
- Beshdash Formation, Cambrian - Middle Ordovician (E-O, bs). Limestones, marbles
 - Chukurchak Formation, Middle Ordovician (O, ch). Grading sandstones, siltstones, shales, conglomerates
 - Chatkaragai Formation, Early-Middle Ordovician (O, ct). Calcarenite, shales
 - Saryjon Formation, Cambrian ? - Early Ordovician (E-O, sr). Grading sandstones, siltstones, shales
- RIPHEAN STRUCTURAL COMPLEX**
- Uzunakhat Formation, Late Riphean? (R, 7 uz). Metasandstones, slates, sericite-biotite-quartz schists
 - Karabura Formation, Late Riphean? (R, 7 kb). Marbles, calcareous shales
 - Bakair Formation, Late Riphean? (R, 7 bk). Marbles, carbonaceous-siliceous slates
 - Kurgan Formation, Late Riphean (R, kg). Speckled rhyolite-dacite tuffs, sandstones, siltstones
 - Chichkan Formation, Late Riphean (R, ch). Siliceous shales, siltified limestones
 - Almasai Formation, Late Riphean (R, as). Speckled siltstones, shales
- ISSYKUL (KYRGYZ-TERSEK) TERRANE**
- LATE ORDOVICIAN - SILURIAN STRUCTURAL COMPLEX**
- Suusamyr Formation, 2 phase, Later Ordovician - Early Silurian (y, O-S, s). Granites
 - Suusamyr Formation, 1 phase, Later Ordovician - Early Siluria (y, O-S, s). Granodiorites, granites
 - Anjar Formation, 3 phase, Later Ordovician (y, O, a). Granites
 - Anjar Formation, 2 phase, Later Ordovician (y, O, a). Porphyritic granite
 - Anjar Formation, 1 phase, Later Ordovician (y, O, a). Granites-Quartz monzonite, syenite, granosyenite
 - Barkol Formation, Later Ordovician (O, ut). Basalt, andesite-basalt, andesite, tuff and conglomerate
 - Olterek Formation, Late Ordovician (O, ot). Speckled crossbedded siltstone and sandstone, conglomerates
 - Tertmasu Formation, Middle - Late Ordovician (O, tr). Sandstones, siltstones, limestone lenses
- CAMBRIAN-MIDDLE ORDOVICIAN STRUCTURAL COMPLEX**
- Kazyk Formation, Middle Ordovician (vO, k). Gabbro, diorite
 - Zyndan Formation, Intrusive phase, Middle Ordovician (yO, Z). Quartz monzodiorite, tracyandesite porphyrites
 - Zyndan Formation, Middle Ordovician (O, zn). Trachybasalts, tracyandesites, rhyolites and tuffs
 - Kentash Formation, Early-Middle Ordovician (O, kn). Basalts, andesites, tuffs, tuff-sandstones, tuff-siltstones.
 - Mazarsu Formation, Early-Middle Ordovician (O, mr). Conglomerate, sandstone, siltstone
 - Tuyuksay Formation, Middle Cambrian - Early Ordovician (E-O, tk). Basalt tuff, chert, siliceous shale
 - Karakatty Formation, Cambrian (E, kr). Basalts, cherts
 - Central Turuk Formation, Cambrian (E, ct). Quartz-diorites
 - Chener Formation, Late Cambrian (E, en). Marble, carbonaceous limestone, carbonaceous-siliceous shale, quartzite
 - Ova Formation, Middle Cambrian (E, ov). Quartzite, quartz sandstone, carbonaceous-siliceous shale, marble
 - Tersbutak Formation, Early-Middle Cambrian (E, tb). Dolomite, shale, siltstone
 - Accretion complex, Vendian ? - Early Cambrian (acV-E). Tectonic units of basalts, ophiolite, tuffs, limestones
- PRE-CAMBRIAN STRUCTURAL COMPLEX**
- Sarytor Formation, Middle Riphean ? (gR, sr) Marbles, schistes, granite-gneiss, gneiss
- Geological Symbols:**
- Amphibolites
 - Conglomerate
 - Gabbro
 - Granite-gneiss
 - Gravelite
 - Gypsum, salt
 - Hornfel
 - Limestone, marble
 - Migmatite
 - Mylonite
 - Rhyolite
 - Rhyolite tuff
 - Sandstone
 - Siltstone
 - Neotectonic vertical fault
 - Neotectonic thrust
 - Neotectonic dextral thrust-strike-slip fault
 - Neotectonic dextral strike-slip fault
 - Neotectonic sinistral strike-slip fault
 - Neotectonic normal fault
 - Paleozoic vertical fault
 - Paleozoic thrust
 - Paleozoic dextral strike-slip fault
 - Paleozoic sinistral strike-slip fault
 - Paleozoic nappe
 - Flora
 - Flora (probable location)
 - Invertebrata
 - Invertebrata (probable location)
 - K-Ar age
 - U-Pb age
 - U/Pb isochrone age
 - Orientation of bedding plane
 - Orientation of foliation plane
 - Orientation of overturned plane
 - Pass
 - Glacier altitude
 - Altitude 400
 - Lake
 - Reservoir
 - Main river
 - Large river
 - River
 - Small tributary
 - Canal
 - Road
 - Locality

© Authors: A.V. Mikolaichuk, F.Kh. Apayarov, T.Yu. Vorob'ev & D. A. Chertkov
Cartographic workers: A.V. Zubovich, A.V. Bobrovski & D.V. Gordeev.
Editors: J-P. Burg
Topographic map source: Topographical map of Scale 1 : 200 000. Sheets K-43-XIV, K-43-XX
State Mapping-Geodetical Survey of Kyrgyz Republic. Printed in 1987.
Map projection: Transverse Mercator WGS-84

Source: Kiselyov V.I., Kordun R.M., 1956; Burtman V.S., Kiselyov S.A., 1957; Dodonova T.A., Kolesnikov B.A., 1959; Kiselyov et al., 1967; Kolesnikov V.A. et al., 1970; Khristov E.V., 1971; Tolskiy V.P., et al., 1972; Morozov V.P. et al., 1979; Orlov L.N., et al., 1979; Chekina S.A., Milkin A.N., 1987; Morozov V.G., et al., 1988; Chernov V.I., et al., 2005; Chernyavskaya Z.I. et al., 2008 & present researchers