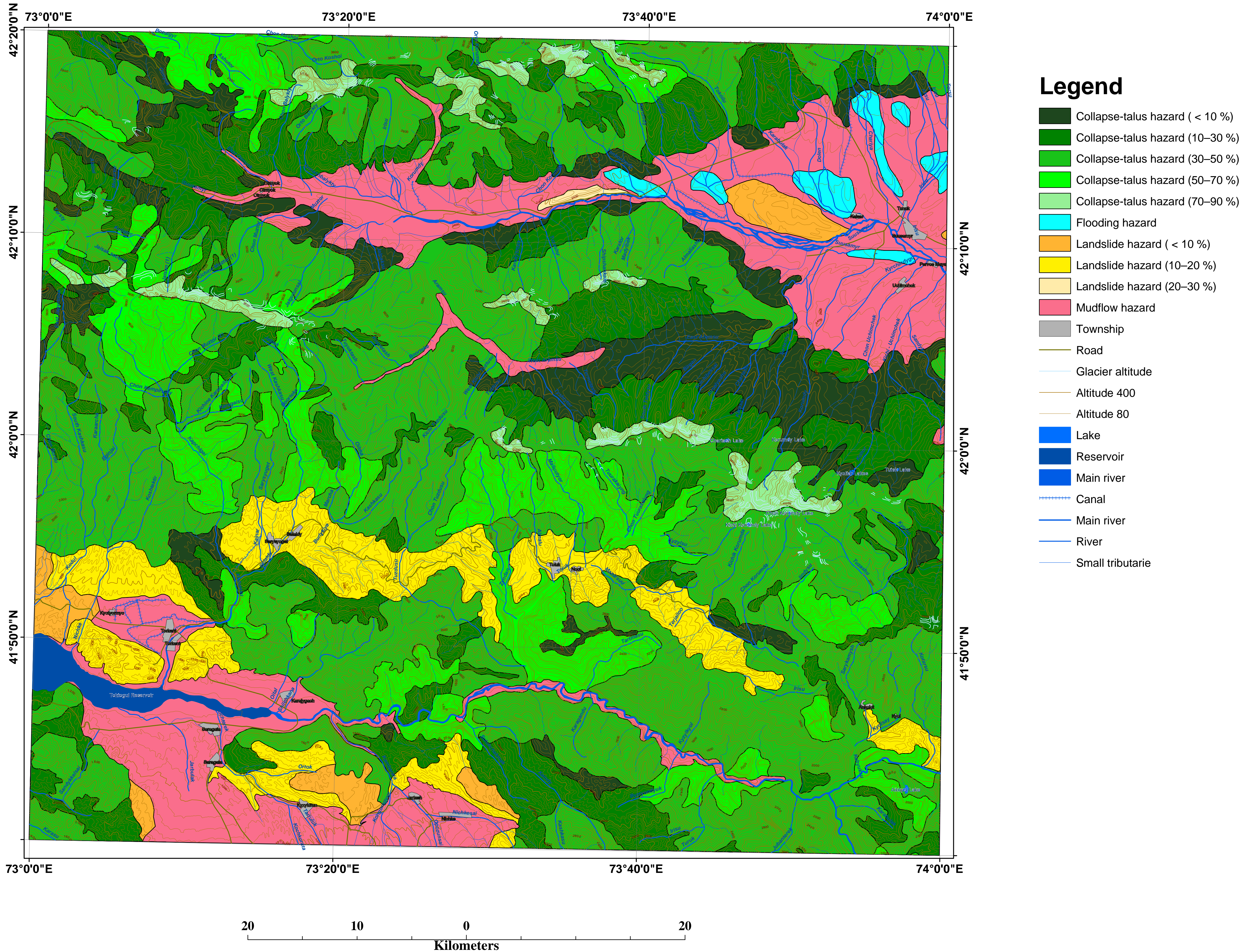


# MAP OF EXOGENIC GEOLOGICAL HAZARD ( INNER TIEN-SHAN ) KYRGYZSTAN

Scale 1 : 200 000

SNSF Project No IB7320-110694  
<http://www.kyrgyzstan.ethz.ch>

2008



© Geological authors: S.A Erokhin & M.V. Gubrenko  
Cartographic workers: A.V. Zubovich & A.V. Bobrovski  
Editors: A.V. Mikolaichuk & J-P. Burg  
Topographic map source: Topographical map of Scale 1 : 200 000. Sheets K-43-XIV, K-43-XX  
State Mapping-Geodetical Survey of Kyrgyz Republic. Printed in 1987.  
Map projection: Transverse Mercator WGS-84

Source: Map of exogenic geological hazards in the Kyrgyz Republic at 1:200 000 scale. Bishkek, 2003. Archives of State Agency on Geology of Kyrgyz Republic.