

# DATA POINTS MAP

(KYRGYZ RANGE AND CHU BASIN)

KYRGYZSTAN

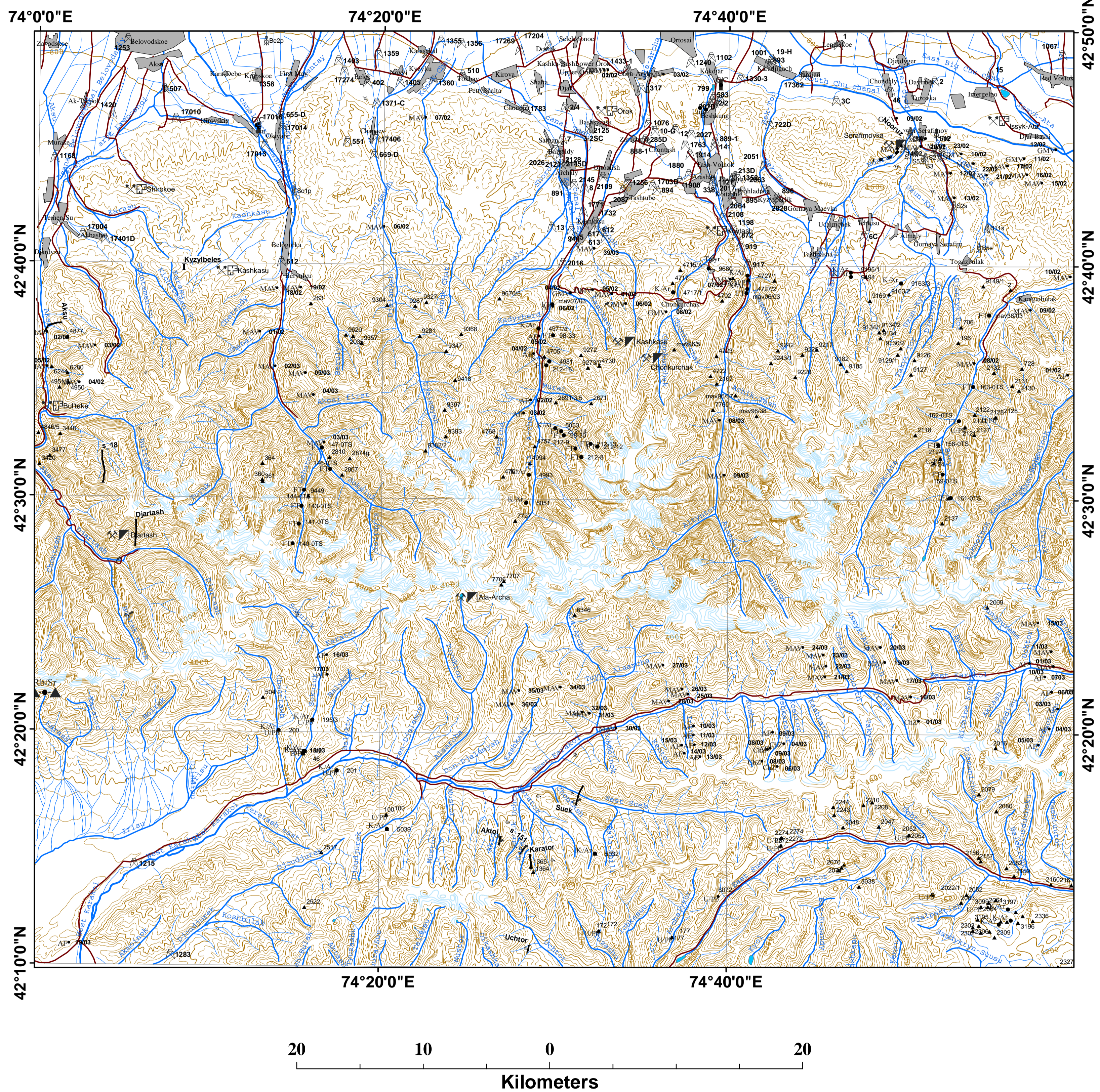
Scale 1 : 200 000

SNF, Project No 7KSPJ065518

<http://www.kyrgyzstan.ethz.ch>

Free use

2004



Source: N.B. Baeva, 1999; A.A. Cherepanov, 1963; V.V. Galanin, 1982; V.A. Grishchenko, 1965; , 1968; S.E. Khristov, 1986; T.D. Lyanov, 1997; V.G. Morozov, 1986; A.E. Naperstkin, 1958, 1961, 1965; V.I. Rubtsov, 1988; I.L. Zakharov, 1981, 1992 & present researches

Creators: A. V. Zubovich, Z. I. Cherniavskaya, M.V.Gubrenko, L. A. Oseledko, Edited by F.Kh. Apayarov, A.V. Mikolaichuk & J-P. Burg

## Legend

- |                                    |   |  |                    |
|------------------------------------|---|--|--------------------|
| ♣ Algae *                          | FT 161-OST Fission Track age, sample number * | Observation points of project participants | — Altitude-80      |
| ♣ Flora *                          | --- Magnetostratigraphical section            | ▲ F.Apayarov outcrops                      | — Altitude-400     |
| ♣ Invertebrate *                   | ▲ 2117 Geochemical sample, sample number *    | ▲ Z.Cherniavskaya outcrops                 | ■ Township         |
| ♣ Vertebrate *                     | Suek Stratigraphical section, section name    | ▲ M.V.Gubrenko outcrops                    | ■ Lakes            |
| ♣ Vertebrate (probable location) * | I Scientific trench                           | ▲ A.V.Mikolaichuk outcrops                 | — Glacier Altitude |
| ♣ Luminescence *                   | ⊠ Mining gallery                              |  | — Rivers           |
| ♣ Radiocarbon *                    | ⊠ Opencast                                    |  | — Small rivers     |
| K/Ar 245 K/Ar age, sample number * | ⊠ Borehole, hole number *                     |  | — Tributaries      |
| U/Pb 413 U/Pb age, sample number * | ⊠ Hydrological borehole, number               |  | — Roads            |
| Rb/Sr Rb/Sr age *                  |   |  |                    |

\* Click on point of interest to open detailed information in ArcView database